
NARROMINE SHIRE COUNCIL
ORDINARY MEETING BUSINESS PAPER – 10 JUNE 2020
REPORTS TO COUNCIL – COMMUNITY AND ECONOMIC DEVELOPMENT

1. FINAL LOCAL STRATEGIC PLANNING STATEMENT

Author	Director Community and Economic Development
Responsible Officer	Director Community and Economic Development
Link to Strategic Plans	CSP – 4.1.2 – The Council elected members are representative of the community and provide strong and visionary leadership. CSP – 4.3.5 – Ensure Council meets the requirements of local government reforms and proactively engages in any processes. CSP – 4.1.3 – Provide opportunities for community members to participate in Council's decision making processes. CSP – 2.1.5 – New plans and strategies are developed in line with the community's needs and encourages economic growth.

Executive Summary

This report is presented to Council to present the final version of the Local Strategic Planning Statement. The draft Local Strategic Planning Statement was approved for public exhibition at the Council meeting of the 8th of April 2020. The final version has been developed following a public exhibition period which closed on the 7th of May 2020.

Report

The Local Strategic Planning Statement (LSPS) sets the framework for Narromine Shire's economic, social and environmental land use needs over the next 20 years. It outlines clear planning priorities describing what will be needed, where these are located and when they will be delivered. The LSPS sets short, medium and long term actions to deliver the priorities for the community's vision.

The LSPS has been prepared in accordance with clause 3.9 of the Environmental Planning and Assessment Act 1979. The LSPS brings together and builds on the planning work found in Council's other plans, studies and strategies such as the Local Environmental Plan, Development Control Plan and Community Strategic Plan.

Importantly the LSPS also considers other regional plans such as the Central West and Orana Regional Plan 2036, the NSW Premier's Priorities, Regional Development Framework and the Destination Country and Outback NSW Management Plan 2018-2020.

Financial Implications

The Local Strategic Plan will assist in the prioritisation of future Council and Community expenditure priorities.

The development cost of the LSPS is factored within Narromine Shire Council's approved expenditure.

NARROMINE SHIRE COUNCIL
ORDINARY MEETING BUSINESS PAPER – 10 JUNE 2020
REPORTS TO COUNCIL – COMMUNITY AND ECONOMIC DEVELOPMENT

1. FINAL LOCAL STRATEGIC PLANNING STATEMENT (Cont'd)

Legal and Regulatory Compliance

The Local Strategic Planning Statement has been prepared in accordance with clause 3.9 of the Environmental Planning and Assessment Act 1979.

Risk Management Issues

Risk management issues are considered minimal in the adoption of the recommendation.

Consultation

The LSPS has been developed for the consideration of the Narromine community, Councillors and Government agencies.

Consultation prior the development of the draft document included a Councilor workshop to discuss the planning priorities and issues facing the community.

During the public exhibition period submissions were received from:

Department of Planning, Industry and Environment
Cancer Council
NSW Environmental Protection Agency
Heritage NSW
Cancer Institute of NSW
Department of Primary Industry
Transport for NSW
Cr Lyn Jablonski

The following table outlines the nature of the submissions received and the amendments made to the draft LSPS.

Item	Source	Summary of Comments in Submission	Amendments
1	DPIE	Multiple comments with regard to terminology, statistic anomalies and general comments to improve drafting have been noted and amended.	Tracked changes to text.
		This LSPS would benefit from a broad view of hazard risk that is not limited to hazard type and exposure, and actually identifies actual and potential community vulnerability. It is recommended that a review of past bushfire and flood mapping is included as an action under Priority 10.	

NARROMINE SHIRE COUNCIL
ORDINARY MEETING BUSINESS PAPER – 10 JUNE 2020
REPORTS TO COUNCIL – COMMUNITY AND ECONOMIC DEVELOPMENT

		Establish hazard planning and disaster resilience principles as primary considerations in all development proposals. Review development controls to encourage resilient buildings.	Amended Priority 10
		An Action to undertake a local adaptation plan is recommended.	Noted.
		LSPS would benefit from promotion of risk reduction and avoidance strategies particularly at place-based level. Include more medium, long term and ongoing actions for resilience building into the future to ensure that resilience is managed and sustained.	Note for future versions.
2	CANCER COUNCIL	Strongly encourage Council to ensure the value of shade for UV radiation protection and other co-benefits are fully recognised in the vision for the LGA.	Noted. Priority 1 addresses.
3	DPIE Climate Resilience and NetZero Emissions Branch	Amendment to Planning Priority 1 & 7 Build drought resilience in rural communities by supporting primary producers and communities to improve preparedness and decision-making.	Amended Priority 7
		Consider adding to Planning Priority 4 – Incorporate water sensitive urban design in new developments.	Included action in Priority 4.
		Consider adding to Planning Priority 9 – Protect and enhance and increase natural and green spaces by considering ecosystem change and species shift from climate change, applying ecosystem adaptation into strategic planning and land protection.	Included in Priority 9.
		Consider adding to Planning Priority 10 – several actions based on guidance documents.	Noted – Should better consider at policy development.

**NARROMINE SHIRE COUNCIL
ORDINARY MEETING BUSINESS PAPER – 10 JUNE 2020
REPORTS TO COUNCIL – COMMUNITY AND ECONOMIC DEVELOPMENT**

		<p>Consider adding to Planning Priority 11 – Identify locations with renewable energy potential and access to the electricity network.</p> <p>Facilitate small -scale renewable energy projects using bioenergy, solar, wind, small -scale hydro, geothermal or other innovative storage technologies through local environmental plans; and</p> <p>Promote best practice community engagement and maximise community benefits from all utility scale renewable energy projects.</p>	Included as actions in Priority 11.
4	NSW EPA	<p>Council's consideration of potential for land use conflicts in decision making should consider:</p> <p>Industries such as those regulated by the EPA under Schedule 1 of the POEO Act in relation to potential noise, water and air quality impacts.</p> <p>Council facilities such as sewerage treatment plants and landfills as regulated be the EPA under section 6 of the POEO Act in relation to potential noise, water and air quality impacts.</p>	Noted
5	Heritage NSW	<p>Heritage NSW supports many of the identified initiatives in the draft LSPS. The following are suggested:</p> <ul style="list-style-type: none"> • Consultation with Aboriginal communities prior to finalising the LSPS. • Preparation of an Aboriginal Cultural Heritage Study to inform amendments to the LEP and protect Aboriginal cultural heritage and cultural landscapes. • Consultation with Aboriginal community about their cultural heritage and connection to Country. • Include the protection and celebration of non-Aboriginal heritage in Council's Planning Priority 2. 	Priority 2 updated.

**NARROMINE SHIRE COUNCIL
ORDINARY MEETING BUSINESS PAPER – 10 JUNE 2020
REPORTS TO COUNCIL – COMMUNITY AND ECONOMIC DEVELOPMENT**

		<ul style="list-style-type: none"> • Considering the linkages between actions and priorities, e.g. the ways in which heritage and culture contribute to attractive and liveable places, local employment and community wellbeing. • Further describing heritage and how it relates to local character, including potentially identifying clusters of places and items which contribute to the significant character of the place, and • We note that Council plans to adaptively reuse Narromine Aerodrome for development as an aviation hub for gliding and other pursuits. We support this endeavour and encourage Council to consider further linkages between culture, heritage and tourism, and the opportunities culture and heritage bring for economic growth through other such projects. 	
6	Cancer Institute NSW	The Institute considers it vital to include within specific references to shade provision for the prevention of skin cancer. May reference documents provided to support submission.	Priority 1 updated.
7	Department of Primary Industries FISHERIES AQUATIC ENVIRONMENT BRANCH	Priority 9 Manage Natural Environments for Current and Future Generations – noted that Key Fish Habitat Mapping prepared by DPI Fisheries is available for Council to utilise. Noted listed sensitive fish communities occur in the LGA, including vulnerable and threatened and endangered species. High aquatic environmental value areas are to be protected in addition to enhancing, protecting and celebrating river systems and wetlands.	Update text to Priority 9 and Action 41.3

**NARROMINE SHIRE COUNCIL
ORDINARY MEETING BUSINESS PAPER – 10 JUNE 2020
REPORTS TO COUNCIL – COMMUNITY AND ECONOMIC DEVELOPMENT**

8	Transport for NSW (TfNSW)	<ul style="list-style-type: none"> • Strategic consideration of compatible land uses in locations that are suitable along the classified road network that have capacity to accommodate safe and efficient access of heavy vehicles. • Strategic consideration of sensitive land uses in locations that can support the provision of safe and efficient access to the road network. • Identification and preparation of the future road and transport network needs in line with future development and planned growth. • Consideration of the capacity and funding mechanisms for future road network in line with future development and planned growth. 	Priority 5 includes these high level actions.
9	Cr Lyn Jablonski	<p>Improved references to Alkane Resources, additional description of Newell Highway and Aerodrome.</p> <p>Additional information for service offering for Health Hub</p>	<p>Amended</p> <p>Noted</p>

Attachments

A marked-up copy showing the suggested amendments to the draft LSPS is enclosed **(see Attachment No. 1)**.

As this matter relates to a planning decision made in the exercise of a function of Council **a division is required to be called on the motion**.

RECOMMENDATION

That Council adopt the Narromine Shire Council Local Strategic Planning Statement June 2020.

NARROMINE SHIRE COUNCIL
ORDINARY MEETING BUSINESS PAPER – 10 JUNE 2020
REPORTS TO COUNCIL – COMMUNITY AND ECONOMIC DEVELOPMENT

2. DEVELOPMENT APPROVALS

Author	Director Community and Economic Development
Responsible Officer	Director Community and Economic Development
Link to Strategic Plans	CSP – 3.1.6 – Encourage developers to consider energy efficiency and sustainable building design options in new developments DP – 3.1.6.1 - Ensure compliance with relevant building codes and regulations

Executive Summary

This report provides information to Council on the approved Development Applications for the month of May 2020.

Report

The approvals for the month of May bring the total approved Development Applications for the financial year to 52 with a total value of \$10,850,090.00

DA No.	Location	LOT/DP	Description	Value	Assessment Time/Days
2020/12	Weemabah Rd, Trangie	Lot: 31 DP: 755108	RFS Shed	\$200,000.00	20
2020/13	Mullah St, Trangie	Lot: 1 Section: 16 DP: 11124139	Shed	\$8,600.00	15

There are currently 6 applications under assessment.

Legal and Regulatory Compliance

Environmental Planning and Assessment Act 1979
Environmental Planning and Assessment Regulation 2000

Risk Management Issues

Nil

Internal/ external Consultation

Nil

Attachments

Nil

RECOMMENDATION

That the information be noted.

NARROMINE SHIRE COUNCIL
ORDINARY MEETING BUSINESS PAPER – 10 JUNE 2020
REPORTS TO COUNCIL – COMMUNITY AND ECONOMIC DEVELOPMENT

3. NARROMINE REGION FACILITIES MAINTENANCE GRANTS PROGRAM

Author: Director Community and Economic Development
Responsible Officer: Director Community and Economic Development
Link to Strategic Plan: CSP – 1.1.4 Promote services and provide facilities that foster healthy lifestyles
CSP – 1.1.5 – Recognise the importance and consider resources needed to maintain open spaces to encourage greater use by the community
DP - 4.3.03.01- Maximise opportunities for utilising grants to supplement and support identified Council priorities and projects. There are also additional links to community and economic growth throughout the strategic plan and Economic Development Strategy.

Executive Summary

This report provides Council with the details of the evaluation of applications submitted for the Narromine Region Facilities Maintenance Grants Program.

Overview

In November 2019, the Australian Government announced an additional \$1 million in support for eligible councils as part of the Drought Communities Program- Extension.

The objective of the Drought Communities Program - Extension is to deliver benefits in declared Council areas, by supporting investment in local infrastructure initiatives.

Funding is targeted at infrastructure projects that provide employment for people whose work opportunities have been impacted by drought; stimulate local community spending; use local resources, businesses and suppliers; and/or provide a long-lasting benefit to communities and the agricultural industries on which they depend.

Narromine Shire Council has allocated \$200,000 of the \$1 million funding to its Community and Economic Stimulus grants program, which was confirmed at Narromine Shire Council's meeting in December 2019. This program is for capital works programs put forward by community groups and organisations. Applicants were invited to apply for up to \$20 000 to undertake each project and applications closed on Friday 1 May 2020.

Report

The Drought Communities Local Stimulus Program was first advertised on Tuesday 7 April 2020, via social media, Council's website and the local newspaper through Council's Column. The criteria encouraged the use of local trades and local spending.

On closing of the submissions, twenty seven (27) submissions were received.

3. NARROMINE REGION FACILITIES MAINTENANCE GRANTS PROGRAM (Cont'd)

Applicants were asked to submit details of their projects in a common format which included details of funding requested, the organisations contribution, the use of local trades and a description of the activity to be undertaken.

The evaluation of each of the projects was undertaken by a panel of Council staff who utilised the following criteria to determine a project ranking:

- Quality of Application
- Community and Drought Impact
- Own Contribution
- Project Completion

Once the projects were ranked, further consideration was given to the location of the projects to ensure as much as possible that each of the Narromine Shire Council communities received a share of the funding to maximise the benefits of the projects across the region.

The following table summarises the applications made **(See Figure 1)**.

**NARROMINE SHIRE COUNCIL
ORDINARY MEETING BUSINESS PAPER – 10 JUNE 2020
REPORTS TO COUNCIL – COMMUNITY AND ECONOMIC DEVELOPMENT**

3 NARROMINE REGION FACILITIES MAINTENANCE GRANTS PROGRAM (Cont'd)

FIGURE 1. SUBMISSIONS RECEIVED FOR NARROMINE SHIRE DROUGHT COMMUNITIES PROGRAM

	PROJECT-DESCRIPTION	APPLICANT	TOTAL PROJECT COST	AMOUNT REQUESTED
Submission 1.	Shade facility structure – a free standing steel frame structure with concrete floor including a toilet, water tank, solar installation & steel bench seating.	Narromine Gliding Club	\$32,000	\$20,000
Submission 2.	Disabled toilet to be added to current amenities block in clubhouse.	Narromine Golf Club	\$25,000	\$20,000
Submission 3.	Irrigation repairs – replacement & repairs to inefficient system.	Narromine Golf Club	\$25,000	\$20,000
Submission 4.	Removal of drought effected trees & dangerous tree limbs from golf course.	Narromine Golf Club	\$25,000	\$20,000
Submission 5.	Shade protection & bench seating - removal of existing shade protection & replace, provide maintenance to current bench seating.	Trangie Bowling Club	\$18,226	\$18,226
Submission 6.	Squash Court upgrades, refurbishment of four squash courts including floor sanding, removal of dangerous floor boards, repairs, line marking & dust proof door.	Narromine Squash Club	\$19,650	\$14,737
Submission 7.	Construction replacement of skillion roof and completion of concreting under new structure around existing fireplace.	Mungery Recreation Reserve	\$42,500	\$20,000
Submission 8.	Restoration of picnic shelter & tables including, pressure cleaning & repainting.	Rotary Park Narromine	\$3,898	\$2,948
Submission 9.	Repair & Repaint exterior to include pressure cleaning, repair and repainting of timber eaves & gables.	Narromine Anglican Church	\$15,860	\$15,860
Submission 10.	Replace entry pathway & veranda, removal of existing floor, replace concrete.	Trangie Country Women's Association	\$9,240	\$7,370
Submission 11.	Improvements to current retirement units including concrete patios, privacy screens, plumbing, drainage, earthworks and privacy back fences.	Trangie Retirement Centre Co-operative Ltd	\$23,637	\$17,000
Submission 12.	Construct additional grandstands & replacement of soccer goals and nets.	Narromine Soccer Club	\$20,000	\$15,000
Submission 13.	Demolition and relocation of existing shelter structure and playground equipment from Swifts Park, removal and disposal of current soft fall.	Trangie Golf Club	\$67,000	\$20,000
Submission 14.	Construction of an outdoor social shelter skillion roof addition to the Trangie Multi-Purpose sports centre, to be attached to the north side of the facility.	Trangie Central School P & C	\$26,500	\$16,500
Submission 15.	Repair & extension of undercover area at the rear of current facility, construction of a ramp for disable access.	Trangie USMC	\$17,100	\$17,100
Submission 16.	Pathway upgrade for disability access to rear of the current structure, cement slab for bus parking area, crusher dust to be applied to backyard area.	Trangie Community Connections	\$18,965	\$10,000
Submission 17.	Supply & Install 5kw split air-conditioner to food van, increase counter space, improvements to van lighting, reseal & paint van roof.	Rotary Club Narromine	\$4,070	\$2,970
Submission 18.	Create a community garden, complete with pavers, lockable garden shed and covered pergola.	Third Space Community Connect	\$11,000	\$7,500
Submission 19.	Construction & installation of a WHS compliant kitchen & bathroom to current Rescue Squad premises.	Narromine Rescue Squad	\$39,806	\$19,806

**NARROMINE SHIRE COUNCIL
ORDINARY MEETING BUSINESS PAPER – 10 JUNE 2020
REPORTS TO COUNCIL – COMMUNITY AND ECONOMIC DEVELOPMENT**

Submission 20.	Installation and supply of four kit security camera system with monitor.	Trangie Mens Shed	\$2,220	\$2,220
Submission 21.	Upgrade of current kitchen & café to WHS standards, including non-slip flooring, electrical, tiling & painting.	Third Space Community Connections	\$31,350	\$15,000
Submission 22.	Replacement of current amenities block & inclusion of showering facilities.	Trangie Pony Club	\$60,000	\$20,000
Submission 23.	Remove damaged existing front fence & replace with a new security fence.	Narromine Christian School	\$29,727	\$20,000
Submission 24.	Provide six eight seater table & chair duos with awnings to provide seating and shade to outdoor areas.	Trangie Local Aboriginal Lands Council	\$17,000	\$12,750
Submission 25.	Purchase of furniture to include, tables, chairs, bar stools, office furniture and bathroom mirrors, as well as raw timber to construct a stand up bar area.	Tomingley Picnic Race Club	\$12,870	\$8,620
Submission 26.	Joint application with submission 27 construction of grassed spectators hill to include seating, concrete beams and astroturf.	Narromine Gorillas Rugby Union Football Club	\$60,000	\$20,000
Submission 27.	Joint application with submission 26, construction of grassed spectators hill to include seating, concrete beams and astroturf.	Narromine Jets Rugby League Football Club	Join Application with Submission 26	\$20,000

NARROMINE SHIRE COUNCIL
ORDINARY MEETING BUSINESS PAPER – 10 JUNE 2020
REPORTS TO COUNCIL – COMMUNITY AND ECONOMIC DEVELOPMENT

3. NARROMINE REGION FACILITIES MAINTENANCE GRANTS PROGRAM (Cont'd)

Choosing the projects:

The total pool available for this project within the Narromine Shire Council's Drought Communities program is \$200,000. In total twenty seven community projects were submitted and the total requested was \$403,607

Projects were ranked by the Council staff panel utilising the following criteria:

CRITERIA	DETAILS
Quality of Application	<ul style="list-style-type: none"> • Logical • Completed
Community and Drought Impact	<ul style="list-style-type: none"> • % of locals affected • Local trades utilised • Long-term legacy of project
Own Contribution	<ul style="list-style-type: none"> • Clear budget • Greater than or equal to 25% contribution • Quotes
Project Completion	<ul style="list-style-type: none"> • Deliverability • Within timeframe (30 November 2020)
Project Location (approx.)	<ul style="list-style-type: none"> • Narromine (75%) • Trangie (23%) • Tomingley (2%)

Once this ranking process was completed, a cut-off point up to \$200,000 was used to determine which projects would be recommended for funding. The following is an approximate percentage breakdown outcome of project location evaluation, Narromine 55%, Trangie 35%, Tomingley 0%, note 10% was awarded to the Mungery application.

It is worth noting that all projects were considered as worthy to be evaluated and none were removed due to criteria not being met or not satisfying the priorities of the Drought Communities Programme Fund.

The following projects have been recommended for funding utilising their evaluated ranking and available funding. They are reflected in **Figure 2** in no particular order.

NARROMINE SHIRE COUNCIL
ORDINARY MEETING BUSINESS PAPER – 10 JUNE 2020
REPORTS TO COUNCIL – COMMUNITY AND ECONOMIC DEVELOPMENT

3. NARROMINE REGION FACILITIES MAINTENANCE GRANTS PROGRAM (Cont'd)

FIGURE 2: RECOMMENDED SUCCESSFUL PROJECT SUBMISSIONS

PROJECT	ORGANISATION/COMMUNITY GROUP	PROJECT TITLE	PROJECT LOCATION	FUNDING RECOMMENDED
Submission 1	Narromine Gliding Club	Shade Facility & Toilet Structure	Narromine	20,000
Submission 8	Narromine Rotary Club	Restoration of Picnic Shelter	Narromine	2,948
Submission 11	Trangie & District Retirement Centre	Retired Living improvements	Trangie	17,000
Submission 17	Narromine Rotary Club	Improvements to Rotary Food Van	Narromine	2,970
Submission 24	Trangie Local Aboriginal Lands Council	Rest is Best Shade & Seating Area – (application request amount \$12,750)	Trangie	6,375
Submission 13	Trangie Golf Club	Relocation and Installation of Council owned Playground Equipment and Shelter – (application request amount \$20,000. Application success depends on outcome of expression of interest on playground equipment)	Trangie	10,000
Submission 23	Narromine Christian School	Construction Front Security Fence (application request amount \$20,000)	Narromine	15,000
Submission 16	Trangie Community Connect	Disability Friendly Backyard Improvements	Trangie	10,000
Submission 14	Trangie Central School P & C	Social Shelter Trangie Multi-Purpose Sports Centre	Trangie	16,500
Submission 7	Mungery Recreational Reserve	Mungery Hall Skillion Roof Addition	Mungery	20,000

**NARROMINE SHIRE COUNCIL
ORDINARY MEETING BUSINESS PAPER – 10 JUNE 2020
REPORTS TO COUNCIL – COMMUNITY AND ECONOMIC DEVELOPMENT**

Submission 6	Narromine Squash Club	Squash Courts Upgrade	Narromine	14,737
Submission 2	Narromine Golf Club	Disabled Toilet Addition to Club House	Narromine	20,000
Submission 21	Third Space Community Connect	Kitchen & Café Upgrade	Narromine	15,000
Submission 10	Trangie CWA	Building & Pathway Upgrades	Trangie	7,370
Submission 20	Trangie Mens Shed	Security Camera Installation	Trangie	2,220
Submission 19	Narromine Rescue Squad	Kitchen & Bathroom Installation & Upgrades	Narromine	19,806
			Total	\$199,926.00

3. NARROMINE REGION FACILITIES MAINTENANCE GRANTS PROGRAM (Cont'd)

Financial Implications

There are no financial implications at this time.

Legal and Regulatory Compliance

Drought and Communities Programme eligibility criteria.
Tendering and procurement guidelines.

Risk Management Issues

Not applicable at this time

Internal/ external Consultation

Priorities for consideration have been undertaken in line with the eligibility criteria.

Community groups were invited to apply for the Narromine Shire Region Drought Communities Program, to undertake capital works projects associated with their organisation.

RECOMMENDATION

1. That the submissions outlined in **Figure 2** be awarded the funding amount shown at **Figure 2**.
2. That successful applicants be informed of the outcome noting they have until Friday 19 June 2020 to accept the letter of offer with Council, with all projects required to be acquitted by 30 November 2020.
3. That the projects that were not successful in this funding round be notified; and
4. That the unsuccessful applicants be advised of any other suitable funding opportunities as they arise.

Phil Johnston

Director Community and Economic Development



DRAFT NARROMINE SHIRE LOCAL STRATEGIC PLANNING STATEMENT

NARROMINE SHIRE COUNCIL

MARCH JUNE 2020

Narromine Shire Council
PO Box 115
124 Dandaloo Street
NARROMINE NSW 2821

Tel:- (02) 6889 9999

Web: - www.narromine.nsw.gov.au

This document has been written and prepared by Narromine Shire Council (Council) staff and was adopted by the governing body of Council on

.....

Narromine Shire Council (2020) Revision History

Version	Responsible Department	Adoption Date	Review Period
1.0	General Manager		4 Years

Contents

Table of Contents

About the Statement	4
Vision	<u>56</u>
Context	<u>67</u>
Narromine Shire Local Government Area	<u>78</u>
Our themes and planning priorities	<u>1819</u>
Implementation, Monitoring and Reporting	<u>3432</u>

About the Statement

This Local Strategic Planning Statement (LSPS) sets the framework for Narromine Shire's economic, social and environmental land use needs over the next 20 years. It outlines clear planning priorities describing what will be needed, where these are located and when they will be delivered. The LSPS sets short, medium and long-term actions to deliver the priorities for the community's vision.

This LSPS has been prepared in accordance with clause 3.9 of the Environmental Planning and Assessment Act 1979 (EP&A Act). The LSPS brings together and builds on the planning work found in Council's other plans, studies and strategies, such as the Local Environmental Plan (LEP), Development Control Plan (DCP) and Community Strategic Plan (CSP). The LSPS will be used to update key components of these plans to present a consistent strategic direction for Narromine.

The LSPS gives effect to the **Central West and Orana Regional Plan 2036**, implementing the directions and actions at a local level. As an integrative local plan, it is also informed by a number of the NSW Premiers Priorities, the Regional Development Framework and the **Destination Country and Outback NSW Management Plan 2018-2020**, amongst others.

The LSPS has also taken account of land use planning in adjacent Orana Councils, including Bogan, Coonamble, Gilgandra, Warren and Warrumbungle. It also works with council's Community Strategic Plan (CSP), which has a similar but broader purpose as to how Council will work to meet the community's needs. The LSPS planning priorities, directions and actions provide the rationale for decisions about how we will use our land to achieve the community's broader goals.



Consultation

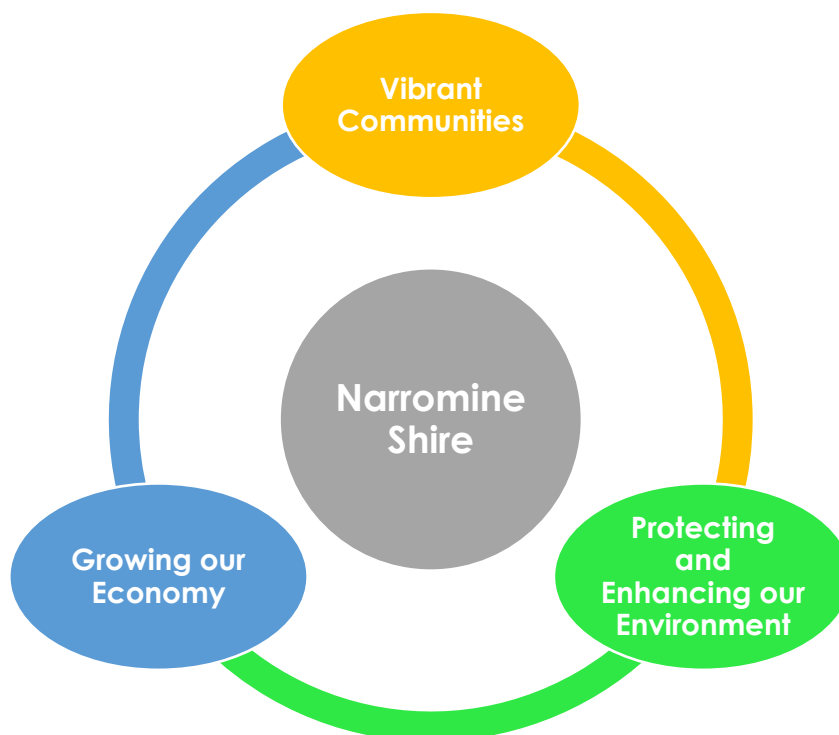
The Narromine Shire Local Strategic Planning Statement (LSPS) has been based primarily on the Consultation that was carried out for the Integrated and reporting framework in 2016-2017 as part of the Community Strategic Plan. The LSPS is required to be consistent with the Community Strategic Plan and any other strategic plans. Council is now seeking community feedback on this revised strategic land use document.

Council's approach to consultation will build upon and test the results of the extensive engagement undertaken in developing Narromine Shire's Community Strategic Plan 2027.

The draft LSPS will be made available for community consultation for a minimum period of 28 days.

Vision

The Narromine Shire is a friendly place to live with a strong sense of community that values our services, facilities and our natural rural environment. We are a community that values the diversity of people, ideas, perspectives and experiences. We work together to strive towards a vibrant, safe and engaged community that provides opportunities for all its members. Our Council is a leader for our community sharing the responsibility for growth, development and provision of services.



Context

Our place in the region

The Narromine Shire is located 40 kilometres west of Dubbo, in the Orana region of New South Wales, Australia. Covering 5224 square kilometres, our vast Shire includes the major rural centre of Narromine, as well as Trangie and Tomingley.

We are a community of approximately 6,500 residents and are proud of our heritage, history and towns that we share with our residents, businesses and visitors. We choose to live in our Shire because of its location with access to a regional centre, its picturesque setting and our close community connections.

The Wiradjuri people were the original inhabitants of this area and the traditional owners of this land. At the last census in 2016, 19.9% of the resident population identified as Aboriginal or Torres Strait Islander.

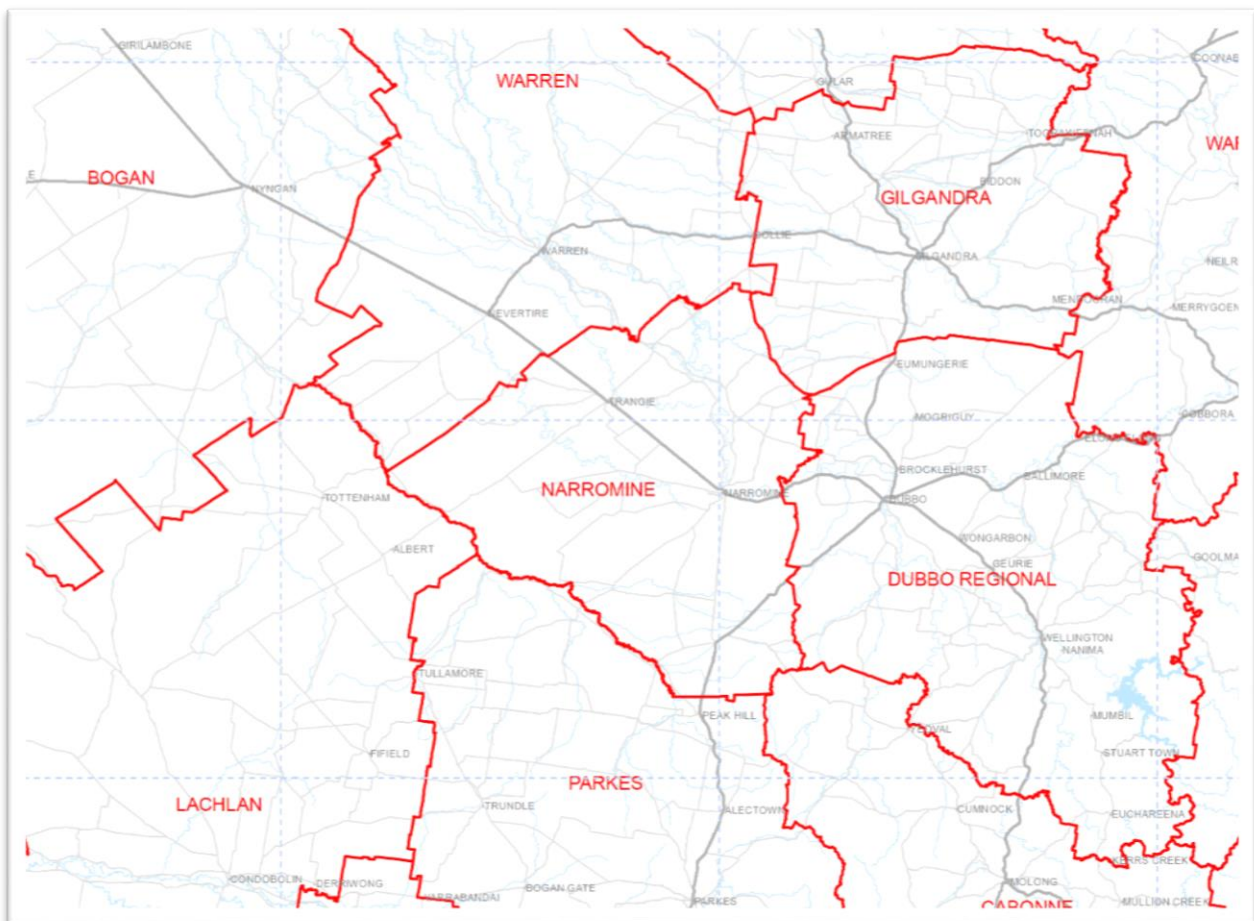
Our agriculture sector has long been the mainstay and we are well known for our sheep, cattle and wool, cotton production as well as broadacre cereal crops. Alkane Resources Limited ([Tomingley Gold](#)) provide significant employment opportunities.

Narromine Shire Council provides a range of services for our community. Our Shire's assets are valued at \$292 million and include roads, water and sewer infrastructure, footpaths, community amenities such as libraries, parks and playgrounds and sporting and recreation facilities. Our Council will continue to focus on improving our community for residents, businesses and visitors to our Shire.



Narromine Shire Local Government Area

Narromine Shire is located within the Orana region of New South Wales, 430 kilometres west of Sydney. The Shire is centrally located in the State with excellent links to Brisbane, Melbourne and Adelaide and the port of Newcastle. The Shire covers an area of 5,224 square kilometres and is bounded by six Local Government Areas; Parkes, Lachlan, Cabonne, Dubbo, Gilgandra and Warren.



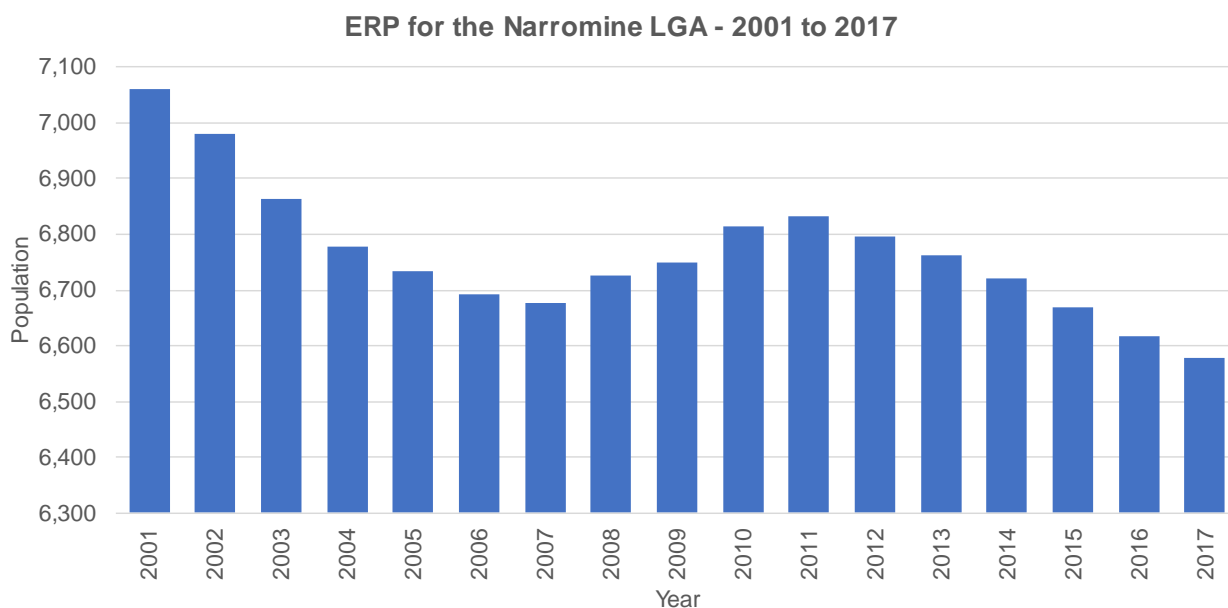
About our People, Environment and Economy

Our People

The Narromine Shire is located 40 kilometres west of Dubbo, in the Orana region of New South Wales, Australia. The Shire covers an area of 5224 km² and has a population 6,444. The Shire comprises three urban centres of Narromine (population 4,776), Trangie (population 1,275) 35 km to the west, and Tomingley (population 393) 35 km to the south.

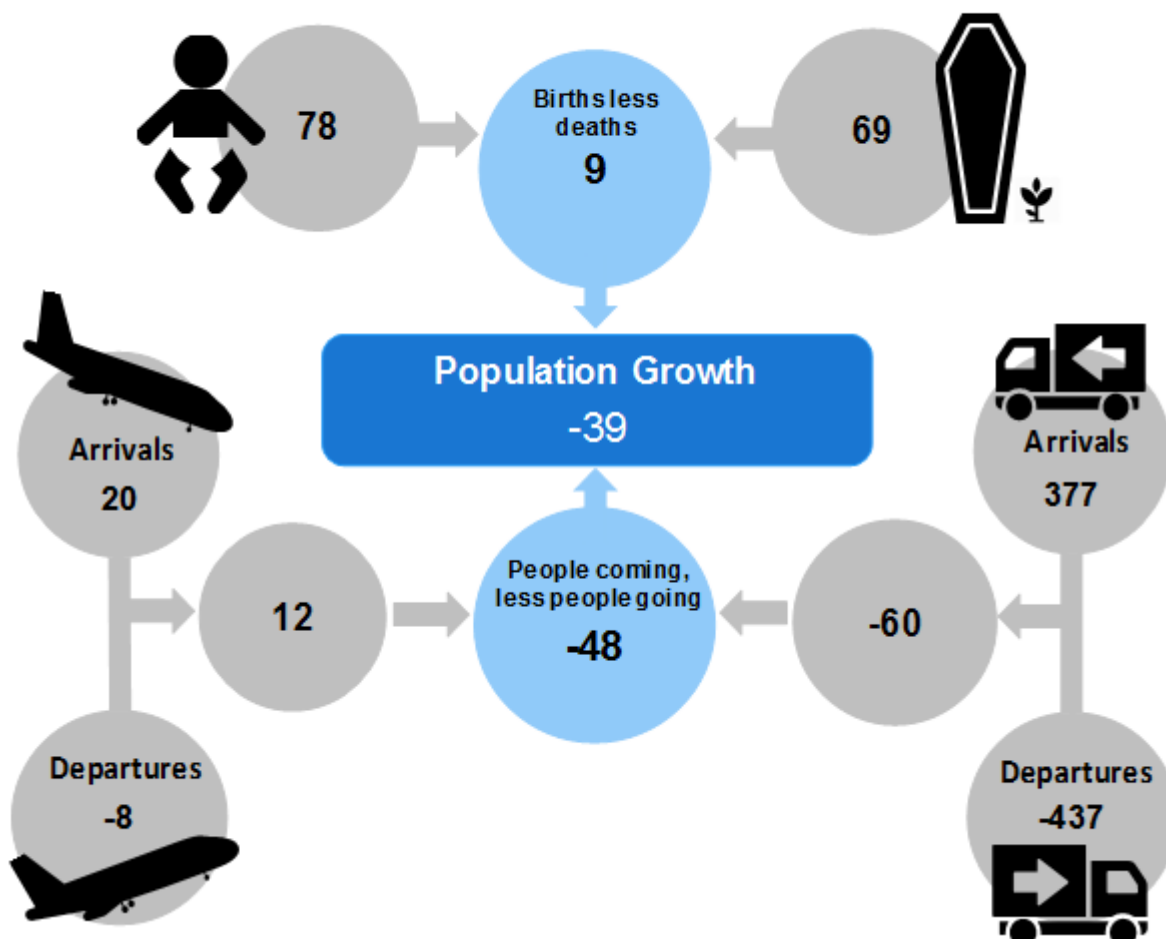
Narromine is a community that is proud of the heritage, history and towns in the region which is shared with residents, businesses and visitors to the Shire. Residents choose to live in the Shire because of its location with access to a regional centre, its picturesque setting and close community connections. The Wiradjuri people are the original inhabitants and the traditional owners of the area.

The population of Narromine is changing. Since 2001 the population has reduced and is ageing.



Source: ABS.Stat, 2018

2016-17 Population Change for Narromine



Our Environment

The Narromine Shire community value our natural and built environment, our resources for the enjoyment of the community and visitors to our Shire.

We want to provide sustainable infrastructure including the maintenance of open spaces and supply of community facilities that meet the needs of our residents, businesses and visitors to our Shire. We recognise that each of our communities, Narromine, Trangie and Tomingley have their own spirit and character and are intrinsically linked to our Shire. We aim to create a boutique village feel throughout, that charms residents and visitors to the region. Our roads are one of our greatest strengths linking our people and products to Australian and international destinations and markets. Access to Dubbo is recognised as a key link for our community.

Effective and sustainable water management and infrastructure is critical for our community. We aim to grow our cycle ways and footpaths to allow greater access for all ages and levels of mobility. We value our rural environment, our natural beauty and aim to instil an awareness of the importance of the natural environment.

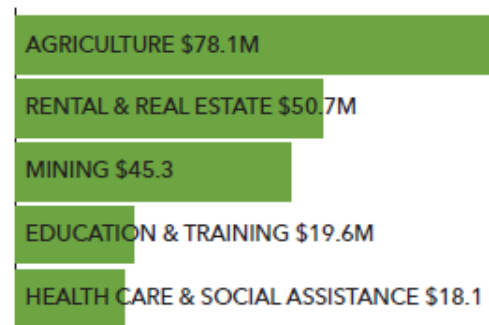
Our Economy

The focus on Employment Land uses within the Narromine Shire specifically targets agriculture, industry, health, commercial and retail areas and has been undertaken to further refine Council's Objectives from the Economic Development Strategy 2018-2021.

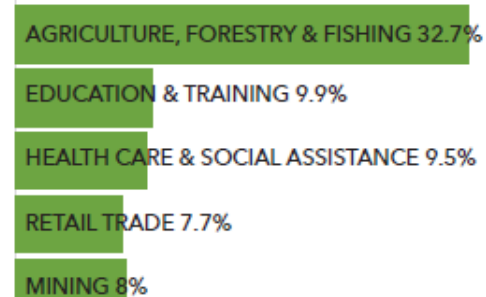
Narromine Shire has an estimated Gross Regional Product of \$378 million and represents 4.4% of the \$6.893 billion value added in Orana region. The Agriculture, Forestry and Fishing sector contributes the largest proportion of value add, contributing more than \$73 million. Narromine Shire is part of the rich Macquarie Valley, largely producing wheat, beef, sheep, wool and cotton. Irrigated agriculture in the Valley produces over 50% of the region's gross value of agricultural production from less than 5% of the land area and less than 20% of available water resources. Narromine Shire has a workforce of 2,061 people representing 4.7 % of the 43,968 people employed in the broader Orana region. The Agriculture, Forestry and Fishing sector is the largest industry employing almost a third of the workforce. The Health and Social Assistance Sector and Retail Trade sectors are also significant employers within Narromine Shire.

The core objective of the development of Employment Lands within the Region is to promote and encourage business, industry and commercial pursuits to stimulate net jobs growth in the Narromine Shire and build on existing industry sectors and resource strengths.

VALUE ADD \$211.8 MILLION

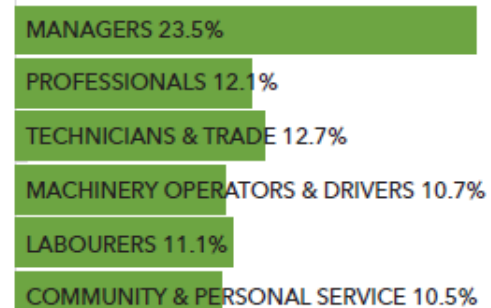


EMPLOYMENT INDUSTRIES



(ABS 2016)

OCCUPATIONS



(ABS 2016)

The sectors that are best placed for growth include;

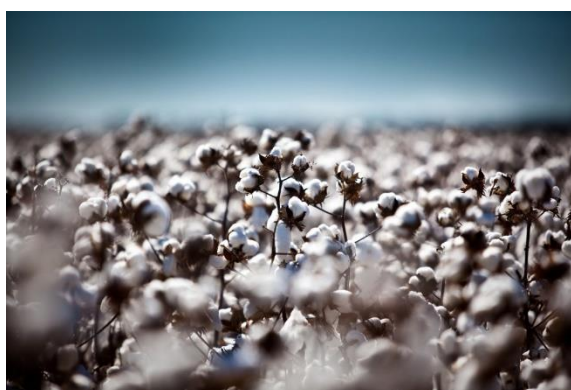
- Agribusiness - agrichemicals, breeding, crop production (farming and contract farming), distribution, farm machinery, processing, and seed supply
- Wholesale trade
- Machinery manufacturing
- Food processing
- Financial services
- Transport
- Construction services
- Automotive and Machinery repair
- Health

The Narromine Shire is operating in a competitive environment against other areas within the Orana and Central West Regions. Each LGA is working to attract investment and development that will help drive population and economic growth.

To attract new investment into the Shire, Narromine Shire's competitive advantages must can be considered against the factors potential investors and developers may take into consideration when relocating.

These include but are not limited to:

- **Accessibility and Location:** accessibility to suppliers or materials (or other inputs) and/ or services. Local supply chain networks, accessibility for employees (and family networks). Our strategic planning ensures that existing business and industry have greater land use certainty and wider product options.



- **Market:** access to markets.
- **Ecosystem Support:** networks.
- **Infrastructure:** all services required are available for connection and are adequate for current and future demands - electricity, water, gas, telecommunications and waste disposal
- **Access to Employment and Labour** with required skills and qualifications
- **Affordability:** key cost comparisons between different locations, such as site costs, building or factory lease costs, energy costs, insurance costs and freight costs
- **Lifestyle and Amenity:** Quality of life factors and general amenity including education facilities, recreation facilities and quality, ~~availability and cost of housing~~ land and housing affordability and housing choice to support a rural lifestyle.



Freight and Logistics

One of Narromine Shires big advantages are its regional connections. Narromine and Trangie are situated on the Mitchell Highway and provide vital transport linkages to and from the western area of the state. The village of Tomingley, located on the Newell Highway, is the southern access point for the Tomingley/Narromine/Gilgandra loop, which is becoming an increasingly important road freight corridor in NSW with connection to the North and South of NSW.

Narromine Shire has rail connections to western NSW through Dubbo, Narromine and Trangie providing a transportation network for bulky goods from the agricultural and mining sectors. Narromine is a centre for aviation, boasting a fully-serviced, CASA-accredited aerodrome with sealed runways, conference facilities and is located within ~~an easy~~ walking distance to town.



Transportation - Inland Rail

The Inland Rail Project presents a key opportunity for the Narromine Shire. The 1,700km line will connect key production areas in Queensland, New South Wales and Victoria with export ports in Brisbane and Melbourne, and provide [improved](#) linkages between Melbourne, Brisbane, Sydney, Adelaide and Perth [with other transport modes](#). It will reduce freight transit times, reduce congestion on rail and road networks and enable the movement of larger freight volumes via rail by making longer and double stacked trains possible. It is the largest freight rail infrastructure project in Australia.

The Parkes to Narromine (P2N) section is one of the priority projects [that completes Inland Rail](#) and is an upgrade of an existing rail corridor, extending approximately 107 kilometres from the Goobang Junction at Parkes. This project also includes approximately 6km of new rail connection at Parkes and is identified as a key priority Project.

The Narromine to Narrabri (N2N) section comprises approximately 307 kilometres of new track. It is the longest and most significant new project [within Inland Rail](#). This new track will reduce transit times and complete one of the missing freight rail links between Melbourne, [and Adelaide, Perth and](#) Brisbane.

~~For Narromine Shire this represents a significant opportunity to create a secondary inland hub focussing on agricultural commodities and assist in removing congestion at Parkes. In addition, surrounding mining development such as Fifield, Tomingley and the newly proposed Alkane Zirconia mine outside of Dubbo may provide opportunities to centralise mining transport.~~

~~There is a strong argument to ensure a high functioning road network to the Shire including~~

~~the upgrade of the Narromine to Dubbo road to support the functioning of the siding. In addition, due to Narromine being situated in a high food production zone there is opportunity to investigate the transportation of snap freeze products and cotton. It is further identified the need for adequate industrial zoned land to support development in the region.~~

It is also acknowledged that the inland rail project has the potential to cause fragmentation issues for existing holdings. Avoiding impact to dwelling entitlements and minimising fragmentation of productive land in the first instance is paramount to Future flexibility by Council in dealing with such issues is required to ensure minimal impact to land owners.



Transportation Hub

For Narromine Shire the new Inland Rail project represents a significant opportunity to create a secondary inland hub focussing on agricultural commodities and assist in removing congestion at Parkes. In addition, surrounding mining development such as Fifield, Tomingley and the newly proposed Alkane Zirconia mine outside of near Dubbo may provide opportunities to centralise mining transport.

There is a strong argument to ensure a high functioning road network to the Shire including the upgrade of the Narromine to Dubbo road Mitchell Highway between Narromine and Dubbo to support the functioning of the siding. In addition, due to Narromine being situated in a high food production zone there is opportunity to investigate the transportation of snap freeze products and cotton. It is further identified the need for adequate industrial zoned land to support development in the region of enterprises needing proximity to rail infrastructure.

Aerodrome and Industrial Precinct

The Aerodrome is world renowned for its gliding facilities, regularly hosting national and international events attracting significant visitation to the region. Additionally, Narromine Shire is well serviced by Dubbo Regional Airport which has four ~~major~~ airlines that provide around 200 direct return flights per week to and from Sydney, Brisbane, Melbourne, Broken Hill, Newcastle, Canberra and Cobar.

The Narromine Aerodrome is currently owned and operated by Narromine Shire Council and is used for both private business and recreation. It is a vital facility for agricultural activities as well as emergency services. It is also popular with recreation uses such as gliders, private and recreational aircraft. The Aerodrome is home to the Narromine Aviation Museum, Narromine Aero Club, Narromine Gliding Club, the Sport Aircraft Association of Australia and other private operations such as training.

Aviation events contribute significantly to the ~~visitor~~ tourism economy attracting national and international visitors to the Shire. The Aerodrome attracts six major local, regional, national and international events annually due to the perfect gliding conditions and the facilities available for gliding at the Aerodrome.

As there are no regular passenger transport services these large-scale aviation events are still a regular occurrence due to the unrestricted airspace for light aircraft and the gliding fraternity. National events include the Two Seat Nationals, NSW Aerobatic Club Trials and Nationals and Ausfly. In 2022, Narromine Aerodrome will host the World Gliding Championships, an international event that will attract participants from over 18 countries.

Capitalising on existing visitation and expanding this market are actions in the Narromine Shire Economic Development Strategy and directly support the aim of the Visitor Economy Action Plan to increase the length of stay of overnight visitors to NSW.

Narromine Shire Council is determined to leverage of this important asset by undertaking the Narromine Aerodrome Industrial Park Project. This will see the construction of a light industrial



park including hangar development to capitalise on the Shire's current Aerodrome and assist in positioning the region as an aviation hub. The Project will assist in growing and diversifying the region's economic base, attracting visitors, extending visitors' length of stay, generating economic activity through job creation and strengthening Narromine's position as the Gliding Capital of Australia. There are no landing fees payable for use of the Narromine aerodrome.

The project is focused on creating an 8.695ha, 22 lot Industrial area within the Narromine Aerodrome located on the Mitchell Highway at Narromine. A total of 13 public access lots would be developed for a range of aviation related businesses and nine (9) restricted airside access lots developed for individual aircraft hangars by private owners and small charter operators.

The Aerodrome site provides the basis to attract agricultural aviation businesses as well as capitalise on the existing gliding market with additional activities such as training and light aviation manufacturing. It is anticipated that most of the regional demand will come from the local market within the Narromine Shire.

However, the ~~cluster~~ effect of the precinct supporting various aviation focussed development; a Aerodrome activity, the gliding sector and the Skypark Residential Development, should provide economic linkages support for businesses looking to ~~support~~ expand this sector in a compatible setting.

Local businesses are usually a primary source of land sales in any community and the available land will encourage existing aviation-based local business owners and entrepreneurs to expand into the industrial park, whilst encouraging other industrial/commercial & retail development to the CBD or industrial areas. –The aerodrome and industrial precinct will have a positive impact on employment and the broader economy and community and creates a unique economic advantage for the Narromine ~~S~~shire. The development of the Narromine Aerodrome Industrial Park will provide the region with employment, skill enhancement, business development, access to national opportunities and technological advancements; and further develop the existing aviation supply chain.

Health Hub

The Central West and Orana Regional Plan 2036 noted the importance and growth of the Health Services sector in the region. The Plan identified that the “ageing population will increase demand for higher-order and specialist medical services and tailored community-based healthcare facilities such as Multi-Purpose Services and e-health initiatives”. Co-location of services and investigation into demand for complementary services available in the wider region should be investigated.

The health sector is a really important industry for the Narromine Shire. With an ageing population and providing significant employment opportunities the health sector is a vital contributor to the local economy as well as the obviously community benefits which improve quality of life. The flow on impacts of a successful health sector help retain and attract people

and business to the shire.

The Health Care and Social Assistance Sector contributes to \$18.124.4 million (or 8.56.8%) in value add to the Narromine economy. The Sector is the largest in both NSW and Australia mostly due to an ageing population and the rise of chronic disease. ~~Within Narromine Shire, the Health Care and Social Assistance Sector is the second largest, representing 10.8% of employment or 196 jobs in 2016.~~

Strengths and Opportunities

Narromine Shire's competitive advantage is its central position within the western communities of NSW. Narromine offers an opportunity for an alternative location for accessing health services for the broader region with abundant parking and good shopping, making it an attractive option, away from the busyness of Dubbo. The growing industry could create new ancillary business and subsequent employment opportunities.

Our Strengths	Our Opportunities
<ul style="list-style-type: none"> ✓ Roads and freight connections ✓ Aerodrome and Industrial Precinct ✓ Agricultural sector and our natural environment ✓ Central location to western communities 	<ul style="list-style-type: none"> ✓ Inland rail strengthening transportation network ✓ Capitalise on Aerodrome visitation ✓ Agricultural Education Rural industries ✓ Health Hub and ✓ Lifestyle residential choices

Our themes and planning priorities

To deliver the vision for the Narromine Shire the following interrelated themes and priorities have been identified to reflect the community's goals for the future.

Vibrant Communities

Priority 1 A safe, active and healthy community

Priority 2 A vibrant and diverse community that has a strong sense of belonging and wellbeing

Priority 3 Access to formal and informal education, information, and other services and opportunities to enhance their lives

Priority 4 A range of housing options for the community

Priority 5 A well connected community through cycle ways, footpaths and public transport

Growing Economy

Priority 6 Sustain and grow our local population

Priority 7 Development, diversification and sustainability of the local business and industry base

Priority 8 Encourage employment and skills development to address industry needs and grow the regions knowledge base.

Protecting and Enhancing Our Environment

Priority 9 Manage natural environments for current and future generations

Priority 10 Sustainable community with appreciation of natural assets

Priority 11 Values the efficient use of utilities, natural resources and energy



Vibrant Communities

Priority 1 A safe, active and healthy community

The Vision for the Narromine Shire is to create a safe, active and healthy community where you can raise a family supported by assets such as the medical centre, libraries, playgrounds, open spaces and sports and recreational facilities. This is particularly important with an ageing population where access to these services will help support this community.

Council has provided a range of services to assist, link and support our members of the community including access to health, recreation and education and after school activities.

This includes a comprehensive health care system and local providers who are committed to delivering high quality health services to the community, including Narromine Hospital.

Priority 1 gives effect to Central West and Orana Regional Plan 2036:

- **Direction 22:** Manage growth and change in regional cities and strategic and local centres
- **Direction 23:** Build the resilience of towns and villages

Planning priority 1 is consistent with our Community Strategic Plan guiding principles:

- *Vibrant Communities Goal: We want to create a safe, healthy and connected region that encourages participation and creates a strong sense of pride in our community and each other's wellbeing.*

To deliver this Planning Priority Council will:

1. Recognise the importance and consider resources needed to maintain open spaces, to encourage greater use by the community.
2. Retain and enhance existing health services including the Narromine and Trangie Hospitals, Trangie Surgery and the Narromine Shire Family Medical Centre
3. Plan for and provide active and passive recreation facilities.
4. Support the provision of active recreational facilities and activities for the aged in the community
5. Revitalise the Narromine Sports Complex into an accessible, affordable multi-purpose Centre.

[Refer to the Action Plan and Implementation Measures for further detail on this Planning Priority.](#)

Priority 2 A vibrant and diverse community that has a strong sense of belonging and wellbeing

The Narromine Shire community is a strong community which actively participates in shaping its future. With a rich heritage and proud history, it also has strong Aboriginal culture, history, art and links to country, with 19.921% of the population identifying as being indigenous.

The identities and values of Narromine Shire have been shaped by the culture of the Wiradjuri People, early farmers and by our strong aviation and sporting history. Today, the Shire has a significant farming-based industry that contributes nationally. Both the youth and older population are valued for their contribution to the community.

Narromine LEP contains a large number of listed heritage items as well as an Archaeological site. The aerodrome forms a significant heritage item.

Priority 2 gives effect to:

- **Direction 24:** Collaborate and partner with Aboriginal communities
- **Direction 29:** Deliver healthy built environments and better urban design

Planning priority 2 is consistent with our Community Strategic Plan guiding principles:

- *Vibrant Communities Goal: We want to create a safe, healthy and connected region that encourages participation and creates a strong sense of pride in our community and each other's wellbeing.*

To deliver this Planning Priority Council will:

1. Protect and celebrate both non-Aboriginal and Aboriginal heritage and culture and provide opportunities for interpretation and understanding.
2. Support the Narromine Aerodrome and Narromine Aerodrome Hangar Development Precinct for development as an aviation hub for gliding and other pursuits.
3. Value our youth's experience; engage them regularly for a range of purposes

Refer to the Action Plan and Implementation Measures for further detail on this Planning Priority.

Priority 3 Access to formal and informal education, information, and other services and opportunities to enhance their lives

Access to a range of education options from pre-school through to vocational and tertiary education is important to the residents of the Narromine Shire.

Narromine residents have access to public, private and independent schools, universities, TAFE campus and trade training centre. Narromine and Trangie offer quality public, catholic and independent education from Kindergarten to Year 12.

These opportunities have been developed over time and need to be preserved and enhanced to adapt to the changing needs of the community. This is particularly important as the population changes and the demand for skilled labour increases. Online Access to educational services is key to opening up opportunities and maintaining community wellbeing, and regional competitiveness.

Priority 3 gives effect to:

- **Direction 6:** Expand education and training opportunities.

Planning priority 3 is consistent with our Community Strategic Plan guiding principles:

- *Vibrant Communities Goal: We want to create a safe, healthy and connected region that encourages participation and creates a strong sense of pride in our community and each other's wellbeing.*
- *Growing our Economy Goal: We have a diverse economy with thriving businesses that offer a range of employment opportunities supported by skill development options.*

To deliver this Planning Priority Council will:

1. Ensure a range of educational options for our youth.
2. Monitor population projections and statistical data relating to the Shire to assist in making informed decisions
3. **Support a**gricultural education **asis** an area identified with opportunity for growth & employment.

[Refer to the Action Plan and Implementation Measures for further detail on this Planning Priority.](#)

Priority 4 A range of housing options for the community

A range of housing options to suit the different lifestyles and needs of the population is integral for the future and resilience of Narromine. The types of housing options are influenced by many factors including economic such as employment trends and types, as well as demographic trends such as an ageing population.

Narromine has excellent access to the Regional City ~~to of~~ Dubbo and can act as a lifestyle choice for people seeking to work or access services in ~~Narromine or~~ Dubbo. It is also the heart of the agricultural sub-region and can provide lifestyle lots for farmers and agribusiness. Narromine also offers potential for appropriate large lot residential areas as a form of housing choice either for down-sizing people from larger farms or people requiring more land for growing families, thereby creating a greater mix of housing.

The proportion of housing stock in Narromine represented by separate houses has increased from 92% in 2006 to 93.6% in 2016. This mirrors the dominant family composition in the shire, being couples with and without children. It also could indicate a small price gap between detached dwellings and residential units where, if affordable, lifestyle choices being made are for detached dwellings.

Changing demographics however such as an ageing population will require large lot residential uses around the dominant centre of the Town of Narromine. Large lot residential housing is a popular lifestyle housing option driven by the desire for a rural lifestyle, particularly close to regional cities and strategic centres. This type of development has been seen as a way to attract new residents.

Land use conflicts between housing and employment lands also need to be managed. Large lot residential development can conflict with productive agricultural, industrial or resource lands. It may also increase pressure for new services outside existing settlements, with costs borne by Council and the broader community. Managing this development and its cumulative impacts will be essential as the regional economy diversifies and development pressure increases. Often retiring farmers look to these living opportunities as well as families and those with horses/livestock. At the same time, living opportunities in and near our towns needs to be provided to accommodate changing populations.

Adopted strategies and planning proposals should aim to provide flexibility to utilise the existing lots close to towns as rural lifestyle opportunities. [Council has adopted the Narromine Shire Council Residential \(and Large Lot Residential\) Strategy to plan for growth, minimise constraint and provide a mix of lot sizes to meet a range of demands.](#)

Priority 4 gives effect to:

- **Direction 12:** Plan for greater land use compatibility
- **Direction 22:** Manage growth and change in regional cities and strategic and local

centres

- **Direction 23:** Build the resilience of towns and villages
- **Direction 25:** Increase housing diversity and choice
- **Direction 26:** Increase housing choice for seniors
- **Direction 28:** Manage large lot residential development
- **Direction 29:** Deliver healthy built environments and better urban design

Planning priority 4 is consistent with our Community Strategic Plan guiding principles:

- Growing our Economy Goal: We have a diverse economy with thriving businesses that offer a range of employment opportunities supported by skill development options.
- Protecting and Enhancing our Environment Goal: We value our natural and built environment, our resources for the enjoyment of the community and visitors to our Shire.

To deliver this Planning Priority Council will:

1. Monitor population projections and statistical data relating to the Shire to assist in making informed decisions
2. Ensure older people have appropriate accommodation to meet their needs
3. Ensure appropriately zoned land that meets residential needs throughout the Shire's communities.
4. Develop appropriate development controls that promote excellence in design and sustainability outcomes.
5. Work with local estate agents to monitor rental demand.
6. Implement recommendations of the Narromine Shire Residential (And Large Lot Residential) Strategy.

[Refer to the Action Plan and Implementation Measures for further detail on this Planning Priority.](#)

Priority 5 A well connected community through cycle ways, footpaths and public transport

Good urban design which includes creating good connectivity can add to the community's cultural, economic and physical wellbeing by creating safe, healthy and socially inclusive places that meet the needs of children, young people, families, singles, people with disabilities and seniors. This is increasingly important with an ageing population which may not have access to private transport as well as creating healthy safe spaces for families and children.

To accommodate Council will consider how pedestrians and cyclists will move about, landscaping and infrastructure for public spaces. Connectivity is a key element in creating successful communities. An integrated built environment enhances liveability and allows the community to thrive. Creating active transport solutions is key element to creating healthy communities but also relieve pressures on our roads and public transport networks and create independence for people who do not have access to private transport. Connectivity within Narromine Shire improves safety, creates healthy lifestyle and recreation opportunities and when linked to public transport can provide a successful integrated transport system.

Priority 5 gives effect to:

- **Direction 20:** Enhance access to air travel and public transport
- **Direction 29:** Deliver healthy built environments and better urban design

Planning priority 5 is consistent with our Community Strategic Plan guiding principles:

- Protecting and Enhancing our Environment Goal: We value our natural and built environment, our resources for the enjoyment of the community and visitors to our Shire.

To deliver this Planning Priority Council will:

1. Work in partnership to ensure our towns including businesses are "mobility friendly".
2. Ensure a range of efficient and effective community transport options are available for access in the Shire and to Dubbo.
3. Maintain aerodrome infrastructure to increase the viability and sustainability of aerodrome operations.
4. Plan and provide accessible and well-connected footpaths, cycle ways and associated facilities within the Shire.
5. Improve the walking environment to encourage opportunities for increased physical activity and therefore a healthier population in the Narromine Shire.
6. Strategic consideration of compatible land uses in locations that are suitable along the classified road network that have the capacity to accommodate safe and efficient access of heavy vehicles.
7. Strategic consideration of sensitive land uses in locations that can support the provision of safe and efficient access to the road network.
8. Identification and preparation of the future road and transport network needs in line with future development and planned growth.

9. *Consideration of the capacity and funding mechanisms for future road network in line with future development*

and planned growth.

9. Consideration of the capacity and funding mechanisms for future road network in line with future development and planned growth.

Refer to the Action Plan and Implementation Measures for further detail on this Planning Priority.

Growing our Economy

Priority 6 Sustain and grow our local population

The total number of people residing in the Narromine Shire in 2018 was 6,567. This represents a decrease of 159 people (-2.36%) from the 2008 total of 6,726 people.

The Narromine Shire needs to focus on its strengths, of strategic location, lifestyle opportunities, history and culture to reverse this trend. Improving access to both physical and online services such as education, training, and health will helpfully attract skilled workers to the Shire.

Narromine, located on the banks of the Macquarie River, offers a quality rural lifestyle only a short 30-minute drive from the regional inland city of Dubbo. Trangie, located just 34km west of Narromine on the Mitchell Highway offers a mix of retail and rural enterprises that service a vast Agricultural area; and Tomingley, the Southern gateway to the Narromine Shire is home to Tomingley Gold Operations, the Shire's largest employers.

Council's Economic Development Strategy highlights that Council will assist to create a modern and self-sustaining industrial region that will leverage road, rail, and air transport modes.

Priority 6 gives effect to:

- **Direction 5:** Improve access to health and aged care facilities.
- **Direction 6:** Expand education and training opportunities.
- **Direction 22:** Manage growth and change in regional cities and strategic local centres.

Planning priority 6 is consistent with our Community Strategic Plan guiding principles:

- *Growing our Economy Goal: We have a diverse economy with thriving businesses that offer a range of employment opportunities supported by skill development options.*

To deliver this Planning Priority Council will:

1. Resolve issues surrounding the flood levee and impacts on residential development.
2. New plans and strategies are developed in line with the community's needs and encourages economic growth.
3. Monitor population projections and statistical data relating to the Shire to assist in making informed decisions.

Refer to the Action Plan and Implementation Measures for further detail on this Planning Priority.

Priority 7 Development, diversification and sustainability of the local business and industry base

The focus on 'employment land' uses within the Narromine Region specifically targets agriculture, industry, health, commercial and retail areas.

Attracting new industry, strengthening existing sectors and the creation of new employment is critical to ensuring the sustainability of the Narromine Region. The priority is to develop employment lands which promote and encourage business, industry and commercial opportunities to stimulate net jobs growth and build on existing industry sectors and resource strengths.

To accompany this, suitable housing and residential lands need to be available to house employees, infrastructure in place such as sewer and water and access to technology and good telecommunications. Improving the presentation of out towns will support the attraction of new business and residents to the area. Where existing mixed land use occurs on main road entries to Narromine, LEP reviews and planning proposals should consider including a tourism or mixed-use zone to support development opportunities and the potential for an intermodal hub.

Priority 7 gives effect to:

- **Direction 1:** Protect the region's diverse and productive agricultural land
- **Direction 2:** Grow the agribusiness sector and supply chains
- **Direction 3:** Develop advanced manufacturing and food processing sectors
- **Direction 4:** Promote and diversify regional tourism markets
- **Direction 10:** Promote business and industrial activities in employment lands

Planning priority 7 is consistent with our Community Strategic Plan guiding principles:

- *Growing our Economy Goal: We have a diverse economy with thriving businesses that offer a range of employment opportunities supported by skill development options.*

To deliver this Planning Priority Council will:

1. To foster our agricultural sector through the identification and support of value adding opportunities.
2. Grow the Narromine Aerodrome as a key aviation industrial hub supported by a detailed Masterplan.

3. Protect high value land resources and maximising opportunities for sustainable growth of existing industries.
4. NSC will prioritise agriculture and primary production where strategically identified and endorsed by DPE
5. Create and support a strong tourism industry that maximises benefits from visitors to the Shire.
- ~~6. Endorse planning mechanisms that support the provision of suitable and serviceable land that will support infrastructure that allows for localised employment opportunities, and~~
- ~~7. To facilitate these the actions within the Narromine Shire Employments Lands Strategy.~~

Refer to the Action Plan and Implementation Measures for further detail on this Planning Priority.

Priority 8 Encourage employment and skills development to address industry needs and grow the regions knowledge base

Improving training and education is essential to provide the skills needed to meet current and future employer and industry demands and maximise use of local work-forces. The Narromine Shire is operating in a competitive environment against other areas within the Orana and Central West Regions, working to attract investment and development that will help drive population and economic growth. Improved training opportunities are linked closely to realising the identified future freight and rail orientated development potential.

One of the key areas potential investors will take into consideration when relocating to the Narromine Shire would be access to labour with required skill and qualifications. It's important that ~~the~~ access to these services is made available in order to maintain and grow the population and economic activity.

Priority 8 gives effect to:

- **Direction 5:** Improve access to health and aged care services
- **Direction 6:** Expand education and training opportunities

Planning priority 8 is consistent with our Community Strategic Plan guiding principles:

- *Growing our Economy Goal: We have a diverse economy with thriving businesses that offer a range of employment opportunities supported by skill development options.*

To deliver this Planning Priority Council will:

1. Support the growth and development of new and existing businesses and industry.
2. Collaboration with education facilities to provide research support to agriculture.
3. Investigate opportunities to build on the Shire's central location and capture value from truck and freight movements.

Refer to the Action Plan and Implementation Measures for further detail on this Planning Priority.

Protecting and Enhancing Our Environment

Priority 9 Manage natural environments for current and future generations

The natural environment is an integral element to both the natural and economic health of the LGA. Agriculture has long been the mainstay of the Narromine Shire, so it is understandable water security is a key concern to the economic success of the region. A clean, sustainable water supply is vital for the health of our community and one of the most important issues facing the region. As well as supply education on the sustainable and responsible use of water is important to make sure the resource is used sparingly.

[High aquatic environmental value areas are to be protected in addition to enhancing, protecting and celebrating river systems and wetlands.](#)

Agricultural uses also play a big part in protecting the future environment, through more sustainable techniques and management of the land.

Priority 9 gives effect to:

- **Direction 11:** Sustainably manage water resources for economic opportunities
- **Direction 13:** Protect and manage environmental assets
- **Direction 14:** Manage and conserve water resources for the environment
- **Direction 15:** Increase resilience to natural hazards and climate change
- **Direction 16:** Respect and protect Aboriginal heritage assets
- **Direction 21:** Coordinate utility infrastructure investment

Planning priority 9 is consistent with our Community Strategic Plan guiding principles:

- Protecting and Enhancing our Environment Goal: We value our natural and built environment, our resources for the enjoyment of the community and visitors to our Shire.

To deliver this Planning Priority Council will:

1. Identify and protect areas of high natural value.
2. Enhance, protect and celebrate our river systems and wetlands.
3. Ensure preservation and maintenance of the Shire's heritage buildings, objects and places of interest.
4. Ensure the Shire's rural land is managed appropriately through comprehensive planning
5. Encourage developers to consider energy efficiency and sustainable building design options in new developments.

Refer to the Action Plan and Implementation Measures for further detail on this Planning Priority.

Priority 10 Sustainable community with appreciation of natural assets and capacity to adapt to climate changes

Climate change ranks amongst the most pressing issues facing our world and the way we live and addressing climate change is a priority for Council. Council will be a leader and through policy and strategy adoption, assist development “to facilitate adaptation to climate change”. Council is committed to providing sustainable infrastructure. Improvements to the energy efficiency of Council's buildings and facilities is a priority. Effective and sustainable water management and infrastructure is critical for our community. We aim to grow our cycle ways and footpaths to allow greater access for all ages and levels of mobility. We value our rural environment, our natural beauty and aim to instil an awareness of the importance of the natural environment.

Council and residents of the Narromine Shire have a joint responsibility in increasing sustainability through transforming from a disposable culture towards recycling and personal responsibility. Council operates several recycling programs which cater for small and large quantities of recyclable materials. Council runs a cardboard and paper recycling program in conjunction with AMCOR. Council operates a cardboard press at the Narromine Waste Management Facility which is used to bale waste paper and cardboard. The bales are then transported to the AMCOR recycling plant in Sydney. Narromine businesses and residents can take their waste paper and cardboard to the Narromine Waste Management Facility. Trangie and Tomingley Waste Management Facilities are provided with a trailer which when full are transported to the Narromine Waste Management Facility for processing.

Since the beginning of the kerbside Recycling Collection Service (July 2010), residents of Narromine Shire Council have recycled nearly 1,551 tonnes of material.

Priority 10 gives effect to:

- **Direction 15:** increase resilience to natural hazards and climate change
- **Direction 23:** Build the resilience of towns and villages

Planning priority 9 is consistent with our Community Strategic Plan guiding principles:

- Protecting and Enhancing our Environment Goal: We value our natural and built environment, our resources for the enjoyment of the community and visitors to our Shire.

To deliver this Planning Priority Council will:

1. Ensure regulatory compliance with environmental legislation.
2. Support, promote and encourage environmentally sustainable practices throughout our businesses.
3. Reduce waste to landfill through effective and efficient domestic waste and recycling services to the community.
- 3-4. Establish hazard planning to improve resilience principles in development and land use decisions.

[Refer to the Action Plan and Implementation Measures for further detail on this Planning Priority.](#)

Priority 11 Values the efficient use of utilities, natural resources and energy

Council is committed to the efficient, balance and sustainable use of utilities, natural resources and energy. In order to achieve a balance between growing the economy and environmental impacts, Council will ensure environmental impacts are minimised while providing appropriate levels of infrastructure to attract and support industry. Responsible industrial development is probably the most effective to protect the natural environment, which includes clustering development where possible, development in the least sensitive areas and mitigate environmental impacts as far as possible. The promotion of sustainable energy and water use particularly in industrial developments will be key to achieving this priority.

[The NSW Government's Electricity Strategy sets out a plan to deliver three Renewable Energy Zones \(REZ\). Narromine Shire partly falls within the Central-West Renewable Energy Zone. This REZ alone is expected to support 450 construction jobs in the central west region. The REZ will play a vital role in delivering affordable energy to help replace the state's existing power stations as they retire over the coming decades.](#) Location of new developments close to exiting utilities such transmission lines and substations will also provide cheaper more efficient utility costs. [Council will actively participate in the development of energy infrastructure in their region, as REZ are delivered.](#)

Priority 11 gives effect to:

- **Direction 8:** Sustainably manage mineral resources.
- **Direction 9:** Increase renewable energy generation.
- **Direction 11:** Sustainably manage water resources for economic opportunities
- **Direction 13:** Protect and manage environmental assets
- **Direction 14:** Manage and conserve water resources for the environment
- **Direction 21:** Coordinate utility infrastructure investment.

Planning priority 9 is consistent with our Community Strategic Plan guiding principles:

- [Protecting and Enhancing our Environment Goal: We value our natural and built environment, our resources for the enjoyment of the community and visitors to our Shire.](#)

To deliver this Planning Priority Council will:

1. Ensure development needs align to utilities infrastructure.
2. Ensure the Shire has access to reliable and affordable internet and communications technology.

Refer to the Action Plan and Implementation Measures for further detail on this Planning Priority.

Implementation, Monitoring and Reporting

Council will ensure the planning priorities are achieved through regular review and monitoring of the actions progress. Monitoring of the actions will where possible, be aligned to existing review and reporting schedules including the LEP (5 years) and CSP (4 years). The entire LSPS will also be reviewed every 7 years. This approach is consistent with the Integrated Planning and Reporting framework under the Local Government Act 1993.

References

- Narromine Shire Community Strategic Plan 2027 - (CSP 2027)
- Narromine Shire Council Agricultural Land Use Strategy Intensive Plant Agriculture February 2013
- Narromine Shire Residential & Large Lot Residential (Land Use) Strategy 2018
- 2018 Employment Lands Focus and Strategy
- Narromine Shire Council Economic Development Strategy (EDS) 2018 – 2021
- Narromine Shire Council Asset Management Strategy 2017 – 2018
- Cale Oval Concept Plan 2018
- NSW Department of Primary Industries, April 2019: Ref POL18/52 Agricultural Land Use Planning Unit - Local Strategic Planning Statements DPI Agriculture Advice
- Narromine Shire Council Delivery Program 2017-2018 / 2020-2021

Action Plan and Implementation Measures

Vibrant Communities

Priority	Action	Aligns	Timing
Priority 1: A safe, active and healthy community	<p>1. Recognise the importance and consider resources needed to maintain open spaces, to encourage greater use by the community.</p> <p>1.1. Include open spaces in review of Asset Infrastructure Strategy (and supporting Asset Management Plans).</p> <p><u>1.2.</u> Support implementation of the Cale Oval Concept Plan 2018.</p> <p><u>1.3.</u> <u>Include well designed shade in Council green spaces as an ongoing commitment to improve shade provision in Council projects and infrastructure provision.</u></p> <p><u>1.2.1.4.</u> <u>In any review of relevant sections of the DCP the provision of shade is to be recognised as important for a safer healthy community.</u></p>	CSP 2027	Short Term: 0-5 years
	<p>2. Retain and enhance existing health services including the Narromine and Trangie Hospitals, Trangie Surgery and the Narromine Shire Family Medical Centre</p> <p>2.1. Partner with govt agencies, groups and organisations.</p>	CSP 2027	Short Term: 0-5 years
	<p>3. Plan for and provide active and passive recreation facilities.</p> <p><u>3.1.4.1.</u> <u>Support adopted actions within the 'Sport and Recreational Services Master Plan 2018'.</u></p> <p><u>3.2.4.2.</u> <u>Revise DCP to include provisions for inclusion of public open space for new greenfield residential subdivisions.</u></p> <p><u>3.3.4.3.</u> <u>Review DCP to ensure the adopted Policies of NSC are aligned.</u></p>	CSP 2027	Short Term: 0-5 years
	<p><u>4.5.</u> Support the provision of active recreational facilities and activities for the aged in the community.</p> <p><u>4.1.5.1.</u> <u>Support adopted actions within the 'Sport and Recreational Services Master Plan 2018'.</u></p>	CSP 2027	Short Term: 0-5 years
	<p><u>5.6.</u> Revitalise the Narromine Sports Complex into an accessible, affordable multi-purpose Centre.</p> <p><u>5.1.6.1.</u> <u>Review relevance of current zoning (RE1 Public</u></p>	CSP 2027	Medium Term: 6-10 years

	Recreation) and permissible uses in future LEP reviews to support future 'multi-purpose' development.		
Priority 2: A vibrant and diverse community that has a strong sense of belonging and wellbeing	6.7. Protect and celebrate both non-Aboriginal and Aboriginal heritage and culture and provide opportunities for interpretation and understanding 6.1.7.1. Partner with govt agencies, groups and organisations. 6.2.7.2. Update DCP to include development standards that support the protection of non-Aboriginal and Aboriginal heritage.	CSP 2027	Short Term: 0-5 years
	7.8. Support the Narromine Aerodrome and Narromine Aerodrome Hangar Development Precinct for development as an aviation hub for gliding and other pursuits. 7.1.8.1. The aerodrome site is listed under Schedule 5 of the LEP as an item of environmental heritage. <u>Review the Conservation Management Plan as development proceeds under the Narromine Aerodrome Strategic and Master Plan.</u> 7.2. Work in partnership to foster connections with new development and heritage aspects. 7.3.8.2. <u>Review the Conservation Management Plan as development proceeds under the Narromine Aerodrome Strategic and Master Plan.</u>	2018 Employments Lands Focus Strategy	Short Term: 0-5 years Medium Term: 6-10 years
	8.9. Value our youth's experience; engage them regularly for a range of purposes. 8.1.9.1. Partner with govt agencies, groups and organisations. 8.2.9.2. Continue to recognise youth as an important group in the Community Engagement Strategy.	CSP 2027	Short Term: 0-5 years
Priority 3 Access to formal and informal education, information, and other services and opportunities to enhance their lives	9.10. Ensure a range of educational options for our youth 9.1.10.1. Partner with govt agencies, groups and organisations.	CSP 2027	Medium Term: 6-10 years
	10.11. Monitor population projections and statistical data relating to the Shire to assist in making informed decisions 10.1.11.1. Utilise data in reviews of the land use strategies and management plans.	CSP 2027	Medium Term: 6-10 years

	<p>11.12. Support Agricultural education is-as an area identified with opportunity for growth. 11.1.12.1. In order to foster development within the area of education a supply of available lands is required. Future land use strategies and LEP review address opportunity for agricultural education and rural industry associations.</p>	2018 Employments Lands Focus Strategy	Medium Term: 6-10 years
<p>Priority 4 A range of housing options for the community</p>	<p>12.13. Monitor population projections and statistical data relating to the Shire to assist in making informed decisions 12.1.13.1. Utilise data in reviews of the residential land use strategies and management plans.</p>	CSP 2027	Short Term: 0-5 years
	<p>13.14. Ensure older people have appropriate accommodation to meet their needs 13.1.14.1. Partner with govt agencies, groups and organisations, to attract development of aged care accommodation and development that meets the needs of older residents. 13.2.14.2. Support the location of health hub/ health services precinct with residential choices.</p>	CSP 2027	Short Term: 0-5 years
	<p>14.15. Ensure appropriately zoned land that meets residential needs throughout the Shire's communities. 14.1.15.1. Recognise the expansion areas identified in the Narromine Shire Residential (And Large Lot Residential) Strategy for preferred rezoning opportunities. 14.2.15.2. Monitor take-up of all land use zones vacant land. Identify short falls. (Review as part of Narromine Shire Council Delivery Program 2017-2018 / 2020-2021).</p>	CSP 2027	Medium Term: 6-10 years Short Term: 0-5 years
	<p>15.16. Develop appropriate development controls that promote excellence in design and sustainability outcomes. 15.1.16.1. Update DCP to include development standards that reflect potential for conflict for dwellings in the rural zones. 16.2. Review DCP in accordance with legislative changes. 15.2.16.3. Incorporate water sensitive urban design in new developments.</p>	CSP 2027	Short Term: 0-5 years
	<p>16.17. Work with local estate agents to monitor rental demand 16.1.17.1. Utilise data in reviews of the residential land use strategies and management plans.</p>	CSP 2027	Short Term: 0-5 years

	<p>17.18. Implement recommendations of the Narromine Shire Residential (And Large Lot Residential) Strategy.</p> <p>17.1.18.1. Minimum of 10 years and maximum of 30 years supply of zoned land should be aimed to be in the pipeline or ready for development to avoid sudden supply/demand mismatch. Strategy is to guide planning proposals for rezoning, and LEP reviews.</p>	Residential (& Large Lot Residential) Strategy 2018	Short Term: 0-5 years
Priority 5 A well connected community through cycle ways, footpaths and public transport	<p>18.19. Work in partnership to ensure our towns including businesses are “mobility friendly”</p> <p>18.1.19.1. Progress actions identified in Council's Pedestrian Access Mobility Plan.</p> <p>18.2.19.2. Partner with govt agencies, groups and organisations.</p>	CSP 2027	Short Term: 0-5 years
	<p>19.20. Ensure a range of efficient and effective community transport options are available for access in the Shire and to Dubbo.</p> <p>19.1.20.1. Audit existing transport options available throughout the Shire and to Dubbo and identify gaps and duplication between service providers.</p> <p>19.2.20.2. Continue to implement and update the NSC Disability Inclusion Action Plan with outcomes reported in Council's Annual Report.</p> <p>19.3.20.3. Work with Government Agencies to lobby for community transport access within the Shire and to Dubbo on a regular basis.</p> <p>19.4.20.4. Maintain the fact sheet developed to assist Narromine Shire Council customer service staff to respond to queries regarding services for people with disabilities.</p>	CSP 2027	Short Term: 0-5 years
	<p>20.21. Maintain aerodrome infrastructure to increase the viability and sustainability of aerodrome operations</p> <p>20.1.21.1. Strategic framework for development to continue to be guided by the Narromine Aerodrome Strategic and Master Plan.</p>	CSP 2027	Short Term: 0-5 years
	<p>21.22. Plan and provide accessible and well-connected footpaths, cycle ways and associated facilities within the Shire</p> <p>21.1.22.1. Continue to implement recommendations of the NSC Pedestrian Access and Mobility Plan (PAMP) 2011 – 2021 and update and revise as part of a staged implementation strategy.</p> <p>21.2.22.2. Construction of new footpaths will be in accordance</p>	CSP 2027	Short Term: 0-5 years

	with Council's Pedestrian Access Mobility Plan (PAMP), Council's Disability Inclusion Action Plan (DIAP) and Council's Asset Management Strategy and Plans (AMSP).		
	<p>22:23. Improve the walking environment to encourage opportunities for increased physical activity and therefore a healthier population in the Narromine Shire.</p> <p><u>22.1:23.1.</u> Continue to implement the Street Light Project to ensure placement of lights mid-block and at all intersections.</p> <p><u>22.2:23.2.</u> Ensure pedestrian facilities identified in the PAMP action plan are continued to the reviewed and implemented.</p> <p><u>22.3:23.3.</u> Retain existing colour schemes in future paving works in town centres to assist sight impaired people.</p>	PAMP 2011-2021	Short Term: 0-5 years
	<p>23:24. Strategic consideration of compatible land uses in locations that are suitable along the classified road network that have the capacity to accommodate safe and efficient access of heavy vehicles.</p> <p><u>23.1:24.1.</u> Identify classified road network on relevant maps and consider in future revisions of the Land Use Strategies adopted by NSC (such as Residential (& Large Lot Residential) Strategy, and Agricultural Land Use Strategy Intensive Plant Agriculture).</p>	TfNSW suggested action	Medium Term: 6-10 years
	<p>24:25. Strategic consideration of sensitive land uses in locations that can support the provision of safe and efficient access to the road network.</p> <p><u>24.1:25.1.</u> Identify any sensitive land uses that require specific road access conditions in future revisions of the Land Use Strategies adopted by NSC.</p> <p><u>24.2:25.2.</u> Support with relevant controls in the DCP for safe and efficient access to the road network.</p>	TfNSW suggested action	Medium Term: 6-10 years
	<p>25:26. Identification and preparation of the future road and transport network needs in line with future development and planned growth.</p> <p><u>25.1:26.1.</u> Continue to identify road network and transport needs and involve the Local Traffic Committee for support and work towards delivery of initiatives.</p>	TfNSW suggested action	Short Term: 0-5 years

	<p><u>26.27.</u> Consideration of the capacity and funding mechanisms for future road network in line with future development and planned growth.</p> <p><u>26.1.27.1.</u> Support the NSC Delivery Program with clear consideration of road network needs correlated to future and existing development needs identified in Land Use Strategies.</p>	<p>TfNSW suggested action</p>	<p>Short Term: 0-5 years</p>
--	--	-------------------------------	----------------------------------

Growing our Economy

Priority	Action	Aligns	Timing
Priority 6 Sustain and grow our local population	<p>27-28. Resolve issues surrounding the flood levee and impacts on residential development.</p> <p><u>27.1-28.1.</u> Strategic planning consideration to identify the levee and implications for residential development areas and future development. (Consider pre-levee requirements and post levee construction and recommendations of the Narromine Floodplain Risk Management Study and Plan 2009 and feasibility study).</p> <p><u>27.2-28.2.</u> Amend the DCP to include a Flood Planning Matrix or the like supported by mapping that clearly outlines the planning and development controls for Urban Floodplains and Rural (or non-urban) Floodplains. Controls to identify the flood affectation, adopted floor levels, evacuation, and design/management measures required.</p>	CSP 2027	Short Term: 0-5 years
	<p>28-29. New plans and strategies are developed in line with the community's needs and encourages economic growth</p> <p><u>28.1-29.1.</u> Review Land Use Strategies in line with results of Economic Development Strategy to ensure planned new land releases to stimulate economy (in line with Narromine Shire Council Delivery Program 2017-2018 / 2020-2021).</p> <p><u>28.2-29.2.</u> Periodic review of the Narromine LEP 2011 - Scope to ensure the land use tables for each zone continue to encompass the strengths of the local economy. Both residential and employment land zones are established with due consideration to local amenity issues and expectations, and likely business development scenarios are able to be accommodated; also, residential opportunities are not hindered by planning controls (such as lot size).</p>	CSP 2027	Short Term: 0-5 years
	<p>29-30. Monitor population projections and statistical data relating to the Shire to assist in making informed decisions.</p> <p><u>29.1-30.1.</u> Land use planning to utilise updated analysis of population and employment profiles for the LGA in updated Strategies.</p> <p><u>29.2-30.2.</u> Ensure that demand for land is adequately accounted for in Land Use Strategies and ensuring rezoning/subdivision keeps pace with demand.</p>	CSP 2027	Short Term: 0-5 years Medium Term: 6-10 years

	<p>29.3<u>30.3.</u> Opportunities for emerging employment lands identified in the Narromine Shire Council Employment Lands Focus and Strategy, are to be continue to be monitored and included in future LEP reviews.</p>		
<p>Priority 7 Development, diversification and sustainability of the local business and industry base</p>	<p><u>30.31.</u> To foster our agricultural sector through the identification and support of value adding opportunities.</p> <p>30.1<u>31.1.</u> Maintain discussions for developing employment lands related to the Agricultural Industry with developers.</p> <p>30.2<u>31.2.</u> Continue to focus on sustainable agricultural practices, minimisation of land use conflicts, and facilitating farm adjustments in the Narromine LEP.</p> <p>30.3<u>31.3.</u> Encourage diversification and value-adding in agriculture by recognising the diversity of modern agricultural enterprises and facilitate their growth through the Narromine LEP.</p> <p>30.4<u>31.4.</u> Review and update the DCP to support agricultural land use and value adding opportunities. Consider the findings of the NSC Agricultural Land Use Strategy - Intensive Plant Agriculture.</p>	CSP 2027	<p>Short Term: 0-5 years</p> <p>Long Term: 11-20 years</p>
	<p><u>31.32.</u> Grow the Narromine Aerodrome as a key aviation industrial hub supported by a detailed Masterplan.</p> <p>31.1<u>32.1.</u> Support the Narromine Aerodrome and Narromine Aerodrome Hangar Development Precinct for development as an aviation hub for gliding and other pursuits. This can be achieved through an update the DCP to reflect adopted details of the current Aerodrome Strategic Master Plan.</p>	CSP 2027	<p>Short Term: 0-5 years</p>
	<p><u>32.33.</u> Protect high value land resources and maximising opportunities for sustainable growth of existing industries.</p> <p>32.1<u>33.1.</u> Identify appropriate sites, in accordance with Land Use Strategy, for value added agricultural related industries (in accordance with Narromine Shire Council Delivery Program 2017-2018 / 2020-2021).</p> <p>33.2. Utilise planning mechanisms to protect land resources. (There is a role for the planning system to facilitate the supply of land and prevent land use conflicts for industry).</p> <p>32.2<u>33.3.</u> <u>Build drought resilience in rural communities by supporting primary producers and communities to improve preparedness and decision- making.</u></p>	CSP 2027	<p>Short Term: 0-5 years</p> <p>Long Term: 11-20 years</p>

	<p>33.34. NSC will prioritise agriculture and primary production where strategically identified and endorsed by DPE</p> <p>33.1.34.1. Prepare future LEP provisions to prevent reoccurrence of land use conflict following assessment of historic land use and subdivision criteria.</p> <p>33.2.34.2. Advise intending purchasers of rural land about the priorities for agriculture through Section 10.7 Certificates.</p> <p>33.3.34.3. Manage land use conflict by supporting pre-existing, lawfully operating agricultural land uses in the case of nuisance complaints and in a manner consistent with the Right to Farm Policy.</p> <p>33.4.34.4. Control the form and scale of permissible development in rural areas.</p> <p>33.5.34.5. Consider a new intensive agricultural zone or the like to manage residential occupations rather than through use of clause 4.2D Rural subdivision for intensive plant agriculture, where dwelling houses are permitted on 40ha lots.</p>	NSW DPI Agriculture advice (April 2019)	Short Term: 0-5 years
	<p>34.35. Create and support a strong tourism industry that maximises benefits from visitors to the Shire.</p> <p>34.1.35.1. Support actions that link agriculture and appropriate forms of rural tourism (as suggested by NSW DPI Agriculture advice).</p> <p>34.2.35.2. Recognise tourism opportunities and facilitate their growth through the Narromine LEP.</p> <p>34.3.35.3. Consider introducing a tourism zone or mixed-use zone on main entrance corridors.</p>	CSP 2027	Short Term: 0-5 years
	<p>35.36. Endorse pPlanning mechanisms that support the provision of suitable and serviceable land that will support infrastructure that allows for localised employment opportunities.</p> <p>35.1.36.1. Coordinate future amendments to the Narromine Local Environmental Plan 2011 to support employment generating land uses, where infrastructure is available, in line with the adopted Economic Development Strategy (and Employment Lands Focus and Strategy).</p> <p>35.2.36.2. Maintain synergies with the Delivery Plan and any adopted Action plan for expenditure of water and sewer headworks charges and Section 7.11 or 7.12 levies or contributions through dedication of land.</p>	CSP 2027	Short Term: 0-5 years
			Medium Term: 6-10years
			Long Term: 11-20 years
			Long Term: 11-20 years

<p>Priority 8 Encourage employment and skills development to address industry needs and grow the regions knowledge base.</p>	<p>36-37. Support the growth and development of new and existing businesses and industry.</p> <p>36.1-37.1. Professional, scientific & technical services that may support businesses and industry are to be supported in association with asset delivery and land use provisions (access to technology and good telecommunications will be important).</p> <p>36.2-37.2. Assessing the biodiversity risks of new developments on agriculture (NSW DPI Agriculture advice (April 2019)).</p> <p>36.3-37.3. The Aerodrome site provides the basis to attract agricultural aviation businesses as well as capitalise on the existing gliding market with additional activities such as training and light aviation manufacturing. Land use provisions are to support this growth opportunity.</p> <p>36.4-37.4. Narromine offers an alternative location for accessing health services for the broader region; to be supported in land use provisions.</p>	CSP 2027	Long Term: 11-20 years
	<p>37-38. Collaboration with education facilities to provide research support to agriculture.</p> <p>37.1-38.1. Foster development of relationships that support agricultural enterprises with diversification, and sustainable practices.</p> <p>37.2-38.2. Ensure land for rural educational land use is available and facilitated in the Narromine LEP.</p>	NSW DPI Agriculture advice (April 2019)	Medium Term: 6-10 years
	<p>38-39. Investigate opportunities to build on the Shire's central location and capture value from truck and freight movements.</p> <p>38.1-39.1. Inland Rail Project presents a key opportunity for the Narromine Shire; this represents a significant opportunity to create a secondary inland hub focussing on agricultural commodities. Sites identified with good inter-modal transport links to be identified in strategic planning.</p>	CSP 2027	Short Term: 0-5 years Medium Term: 6-10 years

Protecting and Enhancing Our Environment

Priority	Action	Aligns	Timing
Priority 9 Manage natural environments for current and future generations	39-40. Identify and protect areas of high natural value <u>40.1.</u> LEP and DCP revisions should include appropriate consideration of the protection of any newly identified areas of natural value and consider recognition of any area of outstanding biodiversity value (or identified in a biodiversity offset scheme). <u>39-1;40.2.</u> <u>Protect and enhance and increase natural and green spaces by considering ecosystem change and species shift from climate change, applying ecosystem adaptation into strategic planning and land protection.</u>	CSP 2027	Short Term: 0-5 years Long Term: 11-20 years
	40-41. Enhance, protect and celebrate our river systems and wetlands. <u>40-1;41.1.</u> Identify Narromine wetlands redevelopment and relevant development standards for stormwater and drainage in the Narromine DCP for various development categories. <u>41.2.</u> Ensure the DCP provisions support a sustainable water supply for rural development. <u>40-2;41.3.</u> <u>Key Fish Habitat Mapping prepared by DPI Fisheries is available for Council to utilise in assessment and to highlight the sensitivity of waterways and riparian zones for aquatic biodiversity.</u>	CSP 2027	Short Term: 0-5 years Long Term: 11-20 years
	41-42. Ensure preservation and maintenance of the Shire's heritage buildings, objects and places of interest. <u>41-1;42.1.</u> Maintain appropriate information pertaining to items of significance to provide to land owners regarding listed items and support heritage conservation through the DCP controls.	CSP 2027	Short Term: 0-5 years
	42-43. Ensure the Shire's rural land is managed appropriately through comprehensive planning <u>42-1;43.1.</u> Planning control of form and scale of permissible development in the rural areas, is to contribute to long term rural land management.	CSP 2027	Long Term: 11-20 years
	43-44. Encourage developers to consider energy efficiency and sustainable building design options in new developments. <u>43-1;44.1.</u> Provide guidelines (in the DCP) that assist developers	CSP 2027	Short Term: 0-5 years

	to identify options to achieve energy efficient outcomes. Support innovative building design in new developments and adaptive reuse scenarios, where alternative building design options are proven to improve energy efficiency.		
Priority 10 Sustainable community with appreciation of natural assets and capacity to adapt to climate changes	<p>44.45. Ensure regulatory compliance with environmental legislation.</p> <p><u>45.1.</u> Through preparation and implementation of local strategic plans, LEP, and DCP, Council will manage the compliance obligations of environmental legislation (and document in statutory reporting).</p> <p><u>44.1.45.2. Review development controls to encourage resilient buildings.</u></p>	CSP 2027	<p>Short Term: 0-5 years</p> <p>Long Term: 11-20 years</p>
	<p>45.46. Support, promote and encourage environmentally sustainable practices throughout our businesses.</p> <p><u>45.1.46.1.</u> Ensure the DCP provisions support a sustainable development concept.</p>	CSP 2027	Short Term: 0-5 years
	<p>46.47. Reduce waste to landfill through effective and efficient domestic waste and recycling services to the community.</p> <p><u>46.1.47.1.</u> Planning control standards for waste management (to reduce landfill), is to be adopted for all new development, including: industrial, commercial and residential land use.</p>	CSP 2027	Short Term: 0-5 years
	<p>48. Establish hazard planning to improve resilience principles in development and land use decisions.</p> <p><u>48.1. Review past bushfire and flood mapping with natural hazard threats to be considered in relation to potential community vulnerability.</u></p>		<u>Medium Term</u>
Priority 11 Values the efficient use of utilities, natural resources and energy	<p>47.49. Ensure development needs align to utilities infrastructure.</p> <p><u>49.1.</u> Ensure all development approvals consider existing utilities infrastructure in their determination (Narromine Shire Council Delivery Program 2017-2018 / 2020-2021).</p> <p><u>49.2. Identify locations with renewable energy potential and access to the electricity network.</u></p> <p><u>49.3. Facilitate small -scale renewable energy projects using bioenergy, solar, wind, small -scale hydro, geothermal or other innovative storage technologies through local environmental plans; and</u></p> <p><u>49.4. Promote best practice community engagement and maximise community benefits from all utility scale renewable</u></p>	CSP 2027 <u>(Align with Central West and Orana Regional Plan)</u>	Short Term: 0-5 years

	<u>energy projects.</u>		
	<p>2.1. Ensure the Shire has access to reliable and affordable internet and communications technology.</p> <p><u>2.1.1.1.</u> Ensure controls in the DCP outline that all new subdivisions are to provide evidence of satisfactory arrangements with energy and telecommunications providers for such services. Also, any connections to Council infrastructure (roads, storm water, water and sewer) must be developed to Council standard.</p> <p><u>2.2.1.2.</u> Council will continue to lobby for the Increase in the coverage area for mobile technology throughout the Shire.</p>	CSP 2027	Short Term: 0-5 years